

Welcome to OneConnect

A telematics platform that makes your fleet more connected with actionable data and insights.



Always
Connected

OneConnect empowers fleet managers to make better decisions.

The only data that matters is data you can put into action.

That's why we built OneConnect. A single platform that gives you a 360-degree view into the activity of your entire fleet, providing insights you can put into action instantly.

It includes everything from **driver and vehicle performance**, to **fuel efficiency and spending**, down to **visualizations** that enable you to track the movement of each of your vehicles. You can even **set safety thresholds** around details like speeding.

It's simply a better way to control your entire fleet – and make better decisions.



Why OneConnect

01.

Seamlessly integrate data from multiple sources

02.

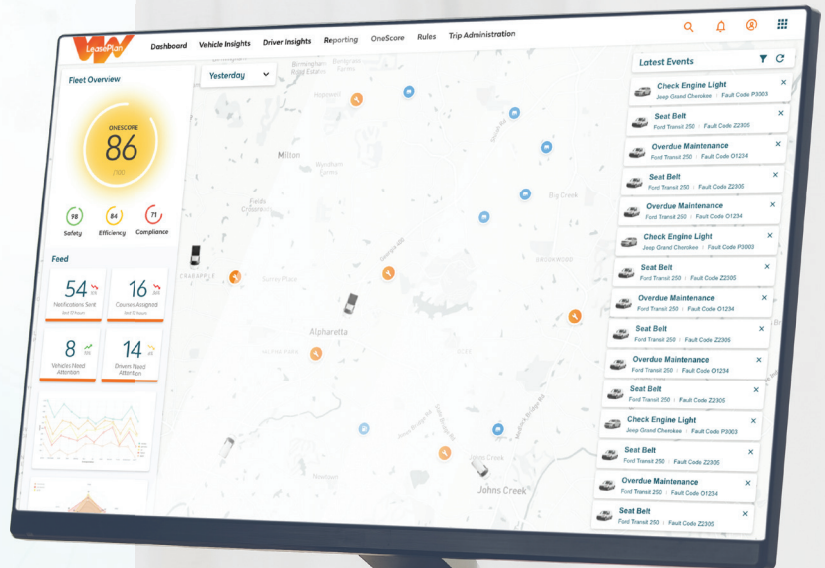
Set thresholds for everyday driver activities

03.

Complete productivity analysis for drivers and fleet vehicles

04.

Upload points of interest for increased transparency and maximized efficiencies



Seamlessly integrate data from multiple sources

Our cloud platform integrates **real-time data** from various channels, providing owners a full-view of their fleet and team performance, and the behavior of individual drivers.

01.

Leverages your existing fleet data from ePlan into an easy-to-use platform.

02.

Source additional data from
embedded connectivity.

[illegible]

Set thresholds for everyday driver activities such as speeding, seatbelt usage, and acceleration

View **actionable driver insights** based on the thresholds that you set in alignment with your fleet policy.

01.

Define your thresholds for each event type such as max speed, seatbelt, reversing, hard braking and more.

02.

View violators via an easy-to-use driver insights dashboard.

03.

Investigate specific violations at the driver level in order to validate and understand the context of a violation.



Complete thorough productivity analysis for drivers and fleet vehicles



Manage and view pertinent trip data to correct, incentivize and analyze driver behavior



View vehicle diagnostics for better maintenance and care



Track fuel and maintenance spend and efficiencies for each vehicle

01.

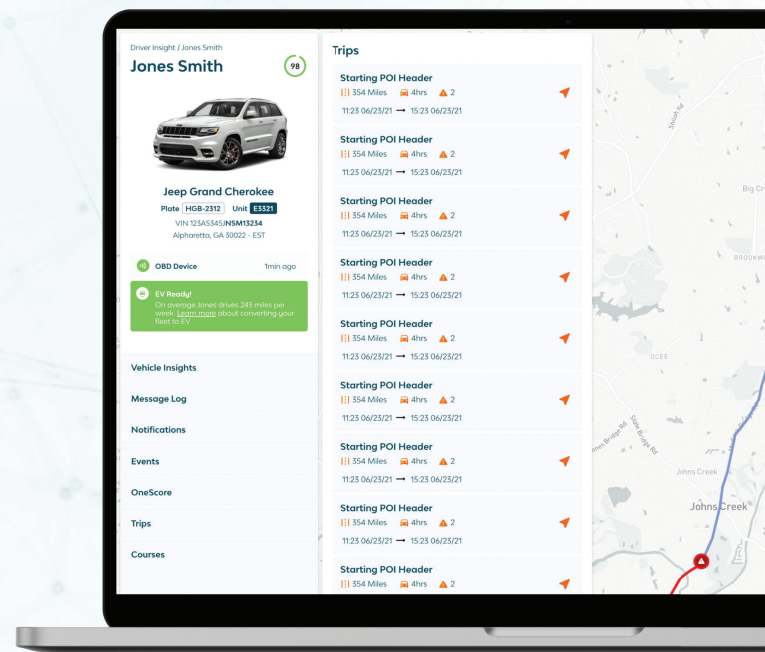
View all vehicle locations and trips in relation to relevant points of interest.

02.

Drill down into a specific vehicle's trips and service stops viewing drivetime and mileage.

03.

Report on vehicle trips, drivetime and mileage in aggregate views.



Always
Connected

Upload points of interest for increased transparency and maximized efficiencies

01.

Use ePlan's bulk data loader to load points of interest relevant to your fleet.

02.

View points of interest on the same map along with your fleet.



Now more than ever, it's important to have complete visibility into your fleet.



OneConnect can provide you with actionable data and insights from a single platform to improve your decisions and increase your fleet efficiencies.

For more information about OneConnect, visit www.leaseplan.com/oneconnect or contact us at contactlpus@leaseplan.com.

About LeasePlan

LeasePlan is a global leader in Car-as-a-Service, with approximately 1.8 million vehicles under management in 29 countries. LeasePlan purchases, funds and manages new vehicles for its customers, providing a complete end-to-end service for a typical contract duration of three to four years.

LeasePlan is committed to taking a leadership role in the transition to zero-emission mobility and has set itself the ambitious goal of achieving net zero emissions from its funded fleet by 2030. With over 50 years' experience, LeasePlan's mission is to provide what's next in sustainable mobility so our customers can focus on what's next for them.

Learn more at www.leaseplan.com/en-us/oneconnect

**Always
Connected**