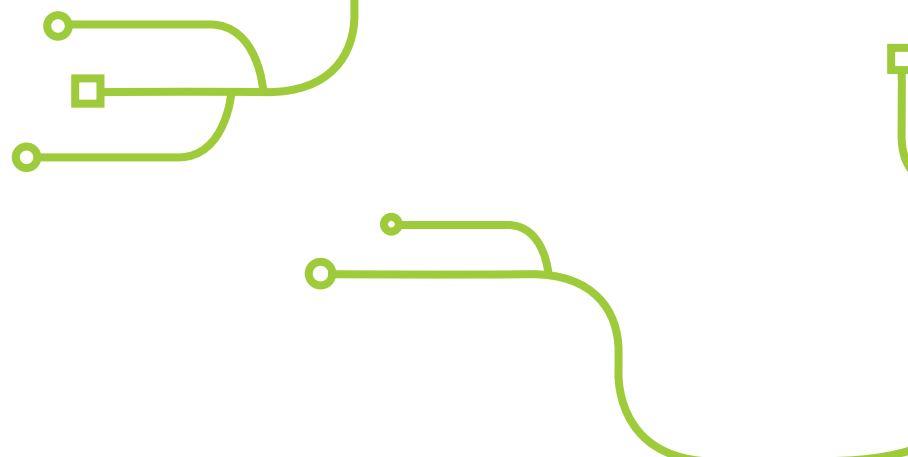


Attitudes towards car data

53%

of respondents are worried about who owns their cars data



52%

are worried about their personal data being left in their cars when they are returned/sold



70%

of respondents said they would be willing to share data (anonymously) to reduce traffic



LeasePlan Mobility Monitor - Car Data & Privacy

The LeasePlan Mobility Monitor is an annual survey of driver opinion regarding the most important subjects facing the industry, produced in partnership with leading research firm Ipsos.

The survey is conducted across 16 countries internationally, including: Belgium, Denmark, France, Germany, Greece, Italy, Luxembourg, the Netherlands, Poland, Portugal, Romania, Spain, Sweden, Turkey, the United Kingdom and the United States.

