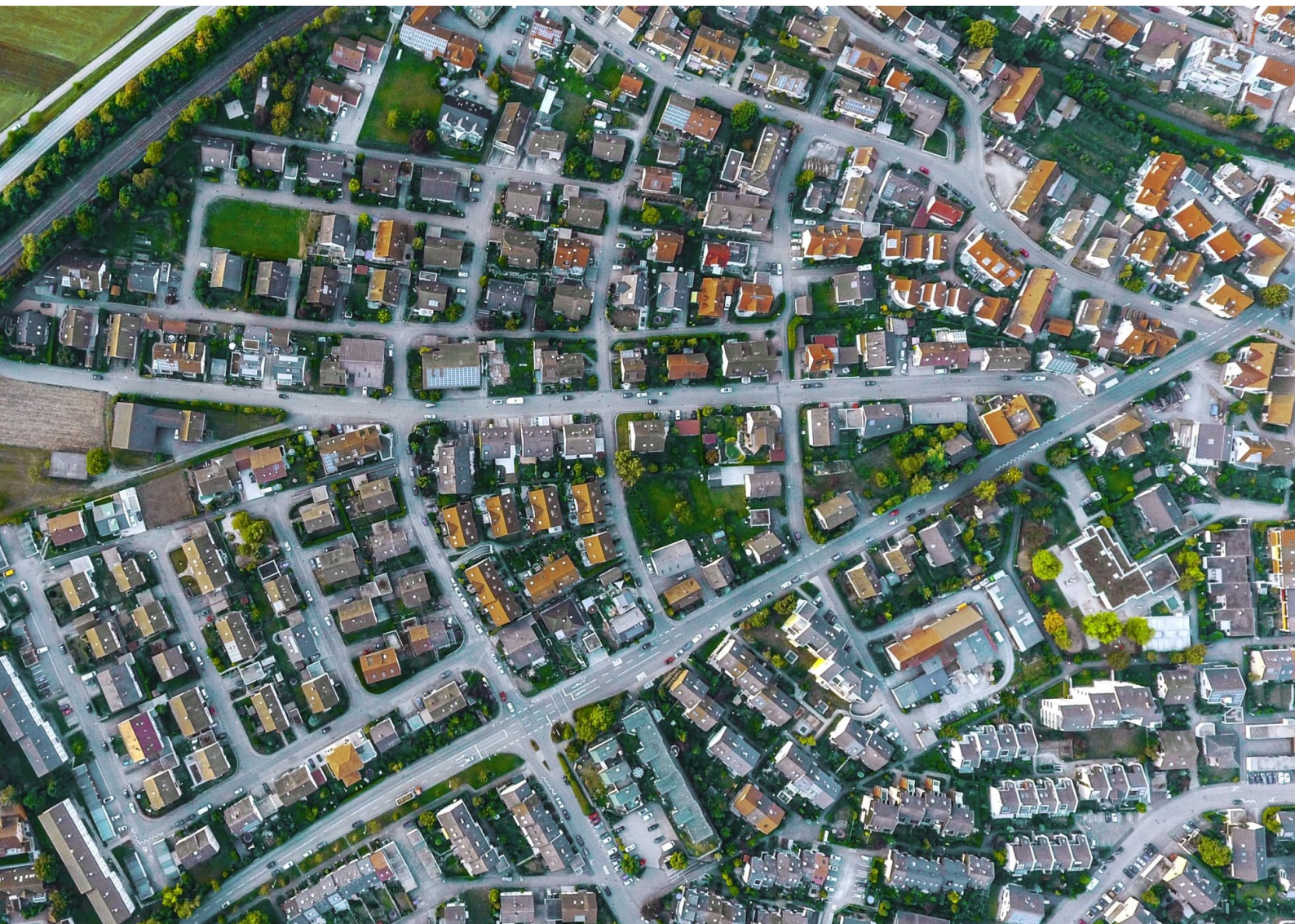


The LeasePlan logo consists of a stylized, wavy orange shape that resembles a mountain range or a series of connected hills. The word "LeasePlan" is written in white, sans-serif font across the middle of this shape.

LeasePlan

Emissions sticker for Geneva

FAQ



Emissions sticker for Geneva | FAQ

As your mobility service provider, we would like to inform you of upcoming changes in connection with the low emission zone in the Canton of Geneva that may affect you.

- 1. Background
 - On 15 January 2020, the Canton of Geneva became the first Swiss canton to introduce a low emission zone for which vehicular access will require an emissions sticker (Stick'Air).
- 2. Which areas are included in the low emission zone in the Canton of Geneva?
 - The entire metropolitan area of Geneva and parts of the municipalities of Carouge, Cologny, Lancy and Vernier are included. There is a transitional grace period until 31 March 2020, after which a fine of CHF 500 can be imposed for transgressions.
- 3. What does this mean for your fleet vehicles?
 - Depending on the emissions code and category of your vehicle, you will need a sticker to be able to drive into the areas mentioned.
- 4. Are there driving bans? Which vehicles are affected?
 - Depending on the alert level and air quality, only one to a maximum of three vehicle categories may enter the above-mentioned areas between 6 a.m. and 10 p.m.
 - Vehicles registered in the canton, in other cantons and in foreign countries are affected.
- 5. How do I determine the category of my vehicle?
 - [Here](#) you can determine which sticker you require – alternatively, you can find an overview of the Canton of Geneva [here](#).
- 6. Where can I find the emissions code/rate of my vehicle?
 - You will find the emissions code/rate on the vehicle's registration document under No. 72 ([here](#)).
- 7. Where can I obtain the Stick'Air sticker?
 - The easiest way is to buy the sticker from a petrol station or garage in the area for CHF 5. You will find a detailed list (Excel) under the following link ([here](#)).
- 8. Can the badge be obtained with the "LeasePlan TravelCard"?
 - Not at this time, but together with our partners we aim to introduce a simplified solution for obtaining the sticker.
- 9. Any further questions?
 - If you have any further questions or need more advice, please do not hesitate to contact our customer service. You can also find all the information in four languages on our homepage in the download area.

LeasePlan (Schweiz) AG
Baslerpark | Baslerstrasse 60
8048 Zürich, Schweiz

www.leaseplan.com

T. +41 (0)44 746 63 63
E. info.ch@leaseplan.com

CHE-105.849.919 MWST
Bankverbindung: UBS AG, 8098 Zürich
IBAN: CH330023023045613101X